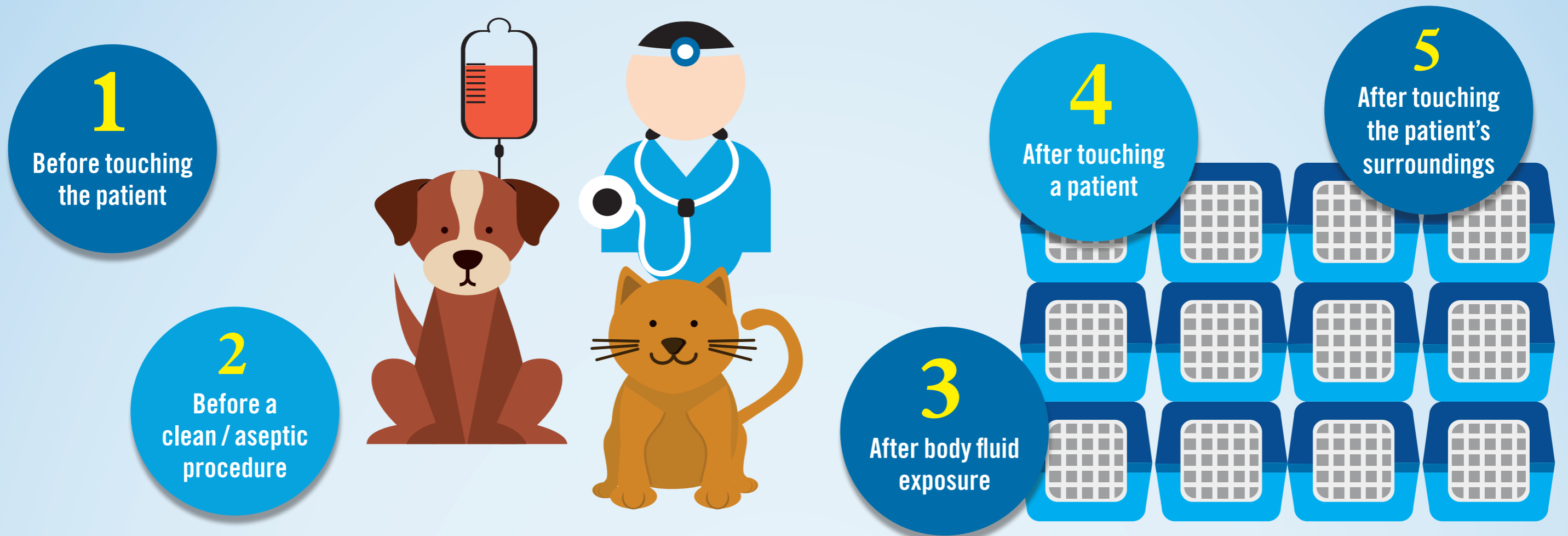




# Clean Hands Save Lives

## Hygienic Hand Sanitation Protocol

### Your 5 Moments for Hand Hygiene – Dog and Cat



<b>1</b> Before touching patient	<p><b>When?</b> Clean hands before touching the patient.</p> <p><b>Why?</b> To protect the patient against harmful germs you carried on your hands.</p> <p><b>Examples:</b> Clinical examination, handling patient, restraining patient,...</p>
<b>2</b> Before a clean / aseptic procedure	<p><b>When?</b> Clean hands immediately before and after an aseptic task.</p> <p><b>Why?</b> To protect the patient against harmful germs, including patients own, from entering its body.</p> <p><b>Examples:</b> Blood sampling, IV catheter manipulation, intra-articular joint treatment, medication administration, catheter placement, wound care,...</p>
<b>3</b> After body fluid exposure	<p><b>When?</b> Clean your hands immediately after exposure risk to body fluids and after glove removal.</p> <p><b>Why?</b> To protect yourself and the health-care environment from harmful patient germs.</p> <p><b>Examples:</b> After contact with any body fluid like urine, blood, nasal discharge, saliva, faeces,...</p>
<b>4</b> After touching a patient	<p><b>When?</b> Clean hands after touching a patient and its immediate surroundings, when leaving the patient's side.</p> <p><b>Why?</b> To protect yourself and the health-care environment from harmful patient germs.</p> <p><b>Examples:</b> After clinical exams, after bandage changes, grooming,...</p>
<b>5</b> After touching the patient's surroundings	<p><b>When?</b> Clean your hands after touching any object or furniture in the patient surroundings when leaving even if the patient has not been touched.</p> <p><b>Why?</b> To protect yourself and the health-care environment from harmful patient germs.</p> <p><b>Examples:</b> When leaving the exam room, kennel area or the hospital.</p>

### The steps on how to clean your hands



- › Waterless rubs are your preferred way of sanitising your hands.
- › A 30–60 second application of the rub\* according to the above technique is necessary.
- › Use water and soap for 40–60 seconds only when hands are visibly soiled.

\* Depending on the formulation of the product used (refer to manufacturer recommendations). Use products that have passed the prEN1500 norm or similar.